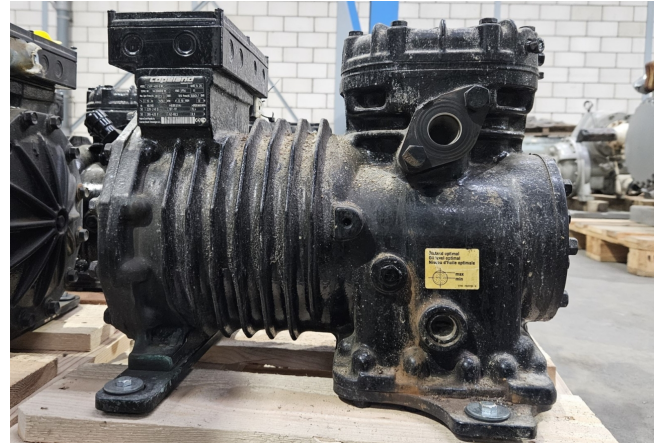


# Copeland LSGP-40X-EWL

## Specifications

|                   |                           |
|-------------------|---------------------------|
| Marca             | Copeland                  |
| Tipo              | LSGP-40X-EWL              |
| Refrigerante      | Freon                     |
| kW at -20°C/+40°C | 7,4                       |
| kW at -30°C/+40°C | 4,1                       |
| kW at -40°C/+40°C | 1,7                       |
| kW at -45°C/+40°C | 0,9                       |
| Mirilla           | ✓                         |
| m3 / h            | 22,5                      |
| Comentarios       | Y.o.b. 2014               |
| Peso kg.          | 77 kg                     |
| Tamaños           | 480x340x360 mm<br>(LxWxH) |
| Stock             | 1                         |



## Description

### Used Copeland LSGP-40X-EWL

Used Copeland LSGP-40X-EWL reciprocating compressor on Freon with a sight glass. The compressor has a displacement of 22,5 m<sup>3</sup>/h at 1450 RPM.

\*Why choose for HOSBV? Were not only the largest used refrigeration specialist in Europe, but also, we deliver all equipment including an extensive test, warranty and industrial cleaning.

\*Optional we can also perform a new paint job and arrange the logistics.

